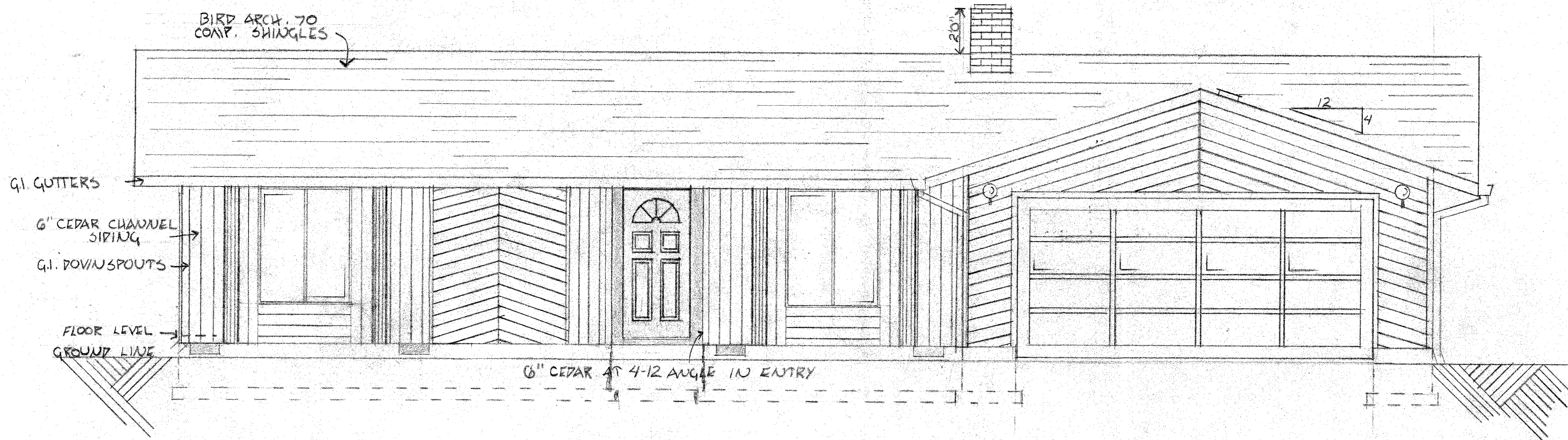


BACK ELEVATION SCALE 1/4" = 1'0"

FOREST GROVE HIGH SCHOOL
HOUSE PROJECT '82-'83

ROB BRIDGES	MAY 28, 1982
FOREST GROVE HIGH SCHOOL	PER 3 ARCH. II



FRONT ELEVATION SCALE 1/4" = 1'0"